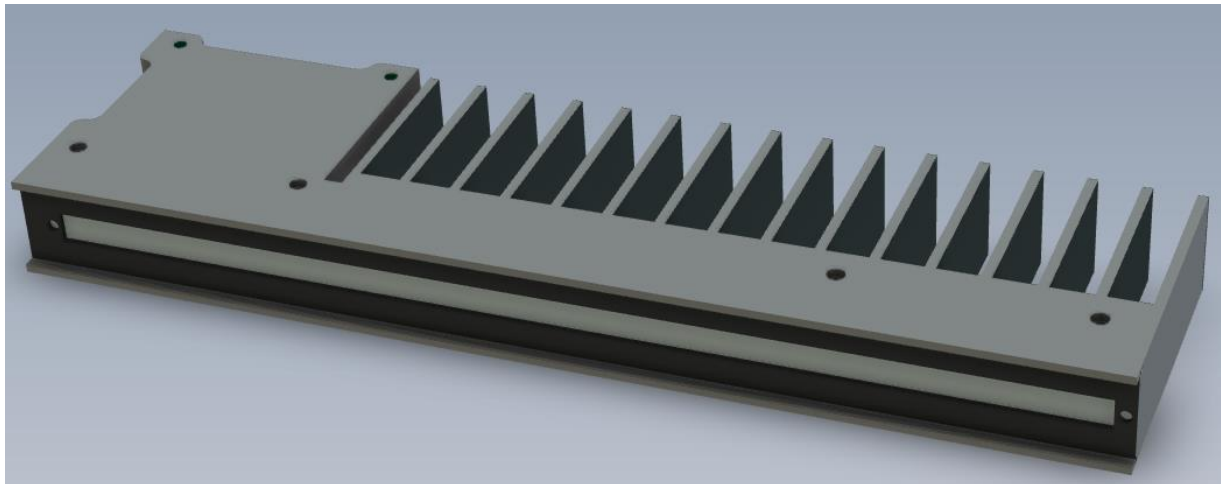


Linescan light LS250-

with strobe input

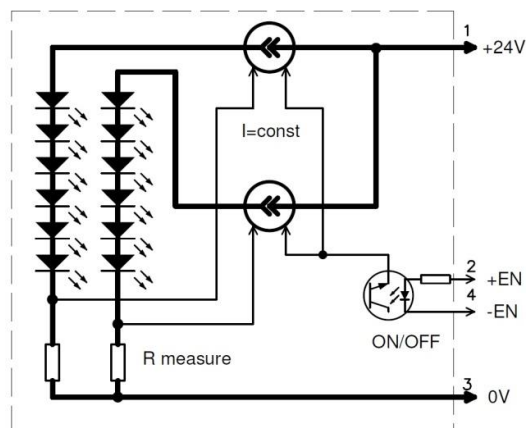
Type name format: LS250-X-YYYYY-Z.ZZ

X: L- lens; D-diffuse; B- aperture
 YYYYY: Color with wavelength
 Z.ZZ: Current consumption at 24V; A



- Colors: Normal White 4000K, IR 850nm Near IR 740nm, Red 640nm, Blue 435nm
- Power supply: 22...36VDC
- Current consumption: 250...1500 mA (depends on order)
- Thermal shutdown: Yes, built-in thermal protection, activation at appr. 65°C
- Temperature range: 0...40°C. Environment thermal condition must be considered. Additional heatsink may be used
- Body material : Anodized aluminium
- Illuminating surface: 12° lens (L), diffuse (D), diffuse combined with aperture (B)
- Electrical connection: 8 mm circular 4 pole male pigtail (50 cm) connector

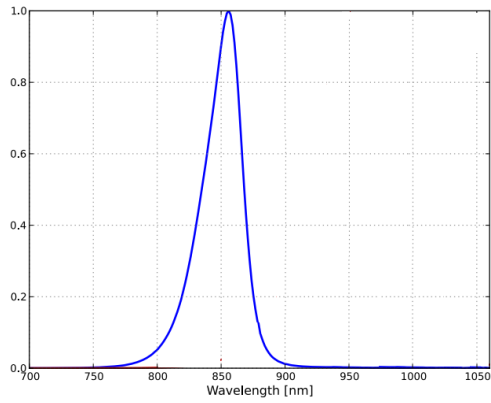
Cable pinout:



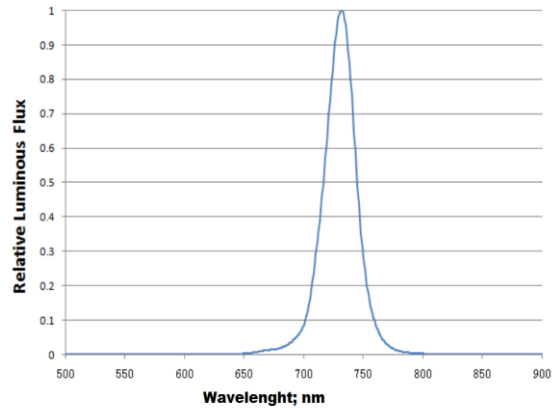
Lamp is ON when 24 VDC is applied between -EN and +EN

Spectral characteristics:

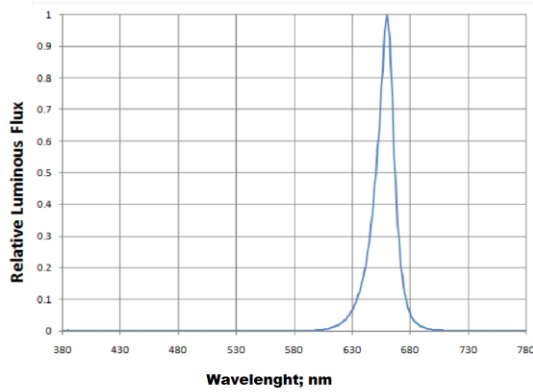
IR 850 nm



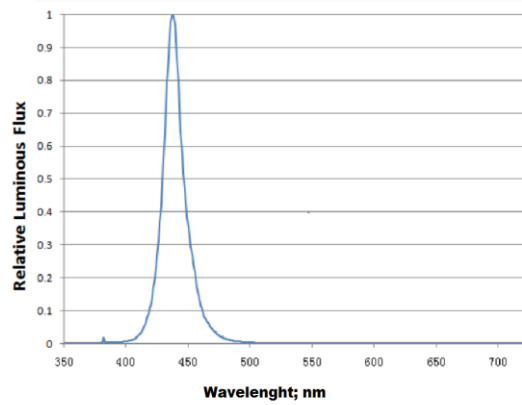
IR 740 nm



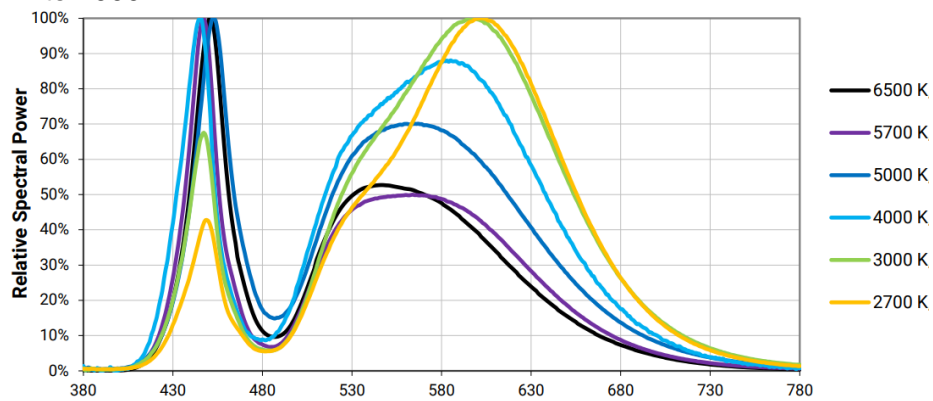
R 640 nm



B 425 nm



White 4000K



Mechanical drawings

